

# JET

**DC-850**

**DUST COLLECTOR**

10001052M

~230V, 50Hz

## PARTS LIST

**Walter Meier (TOOL) AG**

Tämperlistrasse 5

CH-8117 Fällanden

Switzerland

Phone +41 44 806 47 48

Fax +41 44 806 47 58

[jetinfo.eu@waltermeier.com](mailto:jetinfo.eu@waltermeier.com)

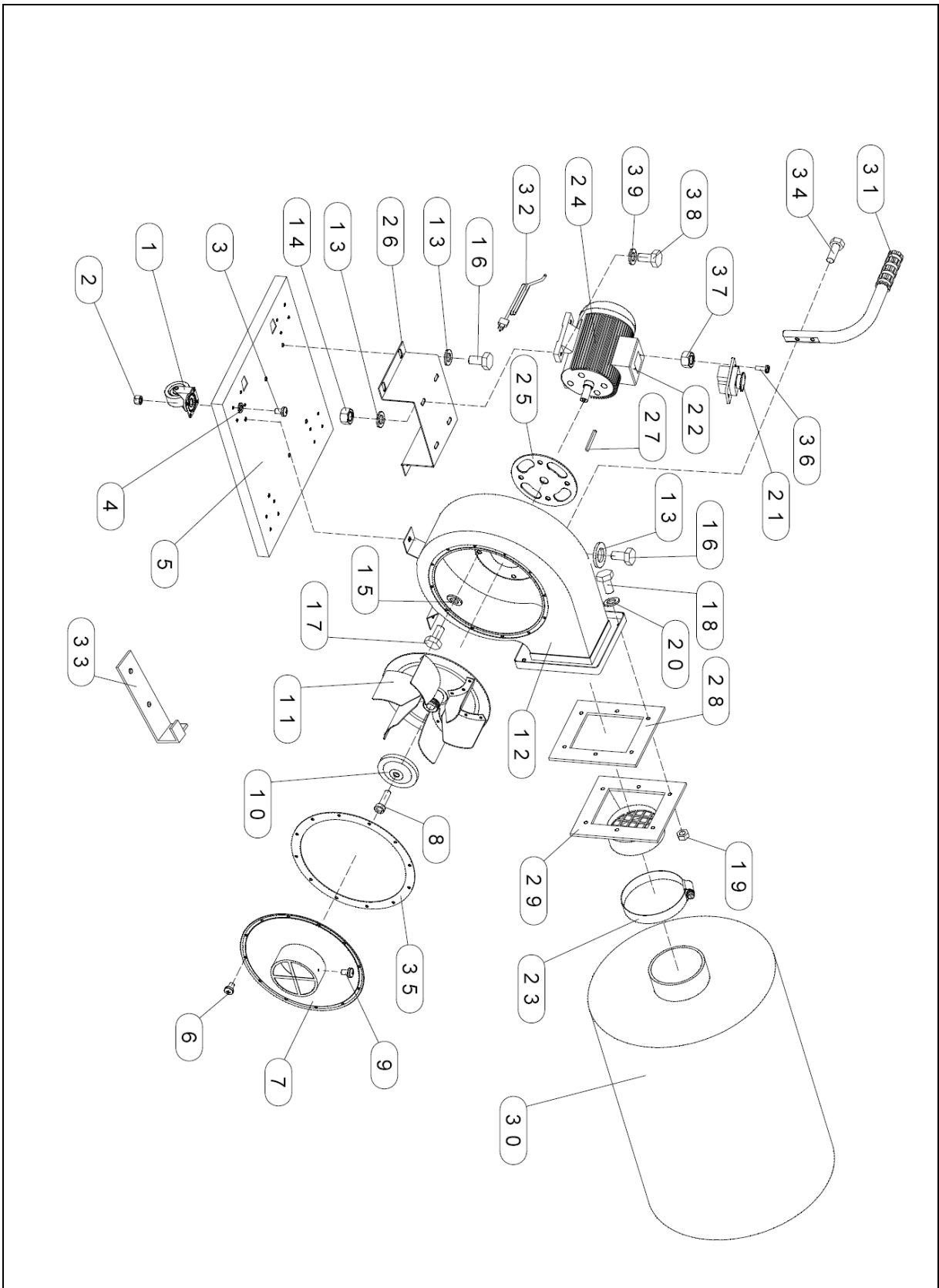
[www.jettools.com](http://www.jettools.com)



P-10001052M

2013-03

# Parts Breakdown for DC-850 Dust Collector



## Parts List for DC-850 Dust Collector

Index No.	Part No.	Description	Size	Qty.
1	DC850-001	Caster	2"	4
2	DC850-002	Hex. Nut	M5	16
3	DC850-003	Pan Head Screw	M5x8	16
4	DC850-004	Washer	5	16
5	DC850-005	Base		1
6	DC850-006	Pan Head Screw	M5x8	12
7	DC850-007	Inlet Guard		1
8	DC850-008	Cap Screw	M6X20-L	1
9	DC850-009	Screw	M5x8	1
10	DC850-010	Washer		1
11	DC850-011	Impeller		1
12	DC850-012	Impeller Housing		1
13	DC850-013	Washer	8	10
14	DC850-014	Nut	M8	4
15	DC850-015	Washer	8	4
16	DC850-016	Hex. Bolt	M8x10	6
17	DC850-017	Hex. Bolt	M8x16	4
18	DC850-018	Hex. Bolt	M6x20	6
19	DC850-019	Hex. Nut	M6	6
20	DC850-020	Washer	6	6
21	DC850-021	Switch		1
22	DC850-022	Switch Box		1
23	DC850-023	Clamp		1
24	DC850-024	Motor 230V,750W, 50Hz complete assembly		1
25	DC850-025	Packing		1
26	DC850-026	Motor Base		1
27	DC850-027	Key	A5X25	1
28	DC850-028	Packing		1
29	DC850-029	Inlet		1
30	DC850-030	Bag		1
31	DC850-031	Handle		1
32	DC850-032	Wire		1
33	DC850-033	Hooks		2
34	DC850-034	Hex. Bolt	M6x20	2
35	DC850-035	Packing		1
36	DC850-036	Screw	M4x12	2
37	DC850-037	Nut	M4	2
38	DC850-038	Bolt	M8x20	4
39	DC850-039	Washer	8	4

# Wiring Diagram for DC-850 Dust Collector

**10001052M**..... ~ 230V, 50Hz

	colour of strands	Litzenfarben	couleur des cordons
BU	blue	blau	bleu
BN	brown	braun	brun
GNYE	green-yellow	grün-gelb	vert-jaune

	meaning of symbol	Bedeutung der Zeichen	interprétation
M	motor	Motor	moteur
S	switch	Schalter	interrupteur
C	condenser	Kondensator	condensateur
OL	Overload cut-off	Überlastschuttschalter	Déclencheur surcharge

